

McAdoo Industrial Park

Site 1



For Sale

19.02 acres

**McAdoo/Tresckow Road
McAdoo, PA 18237**



*State and Local Taxes
abated through 2017!*



McAdoo Industrial Park is located right outside of Hazleton in Banks Township, Carbon County, just 3 miles from Exit 138 of Interstate 81 via SR 309. The industrial park has over 100 acres of fully developed sites available with infrastructure already in place. McAdoo Industrial Park is home to industries like Altadis USA, PSI Container, and Haulmark Industries.



Industrial site suited for
Manufacturing / Distribution / Warehouse

McAdoo Industrial Park

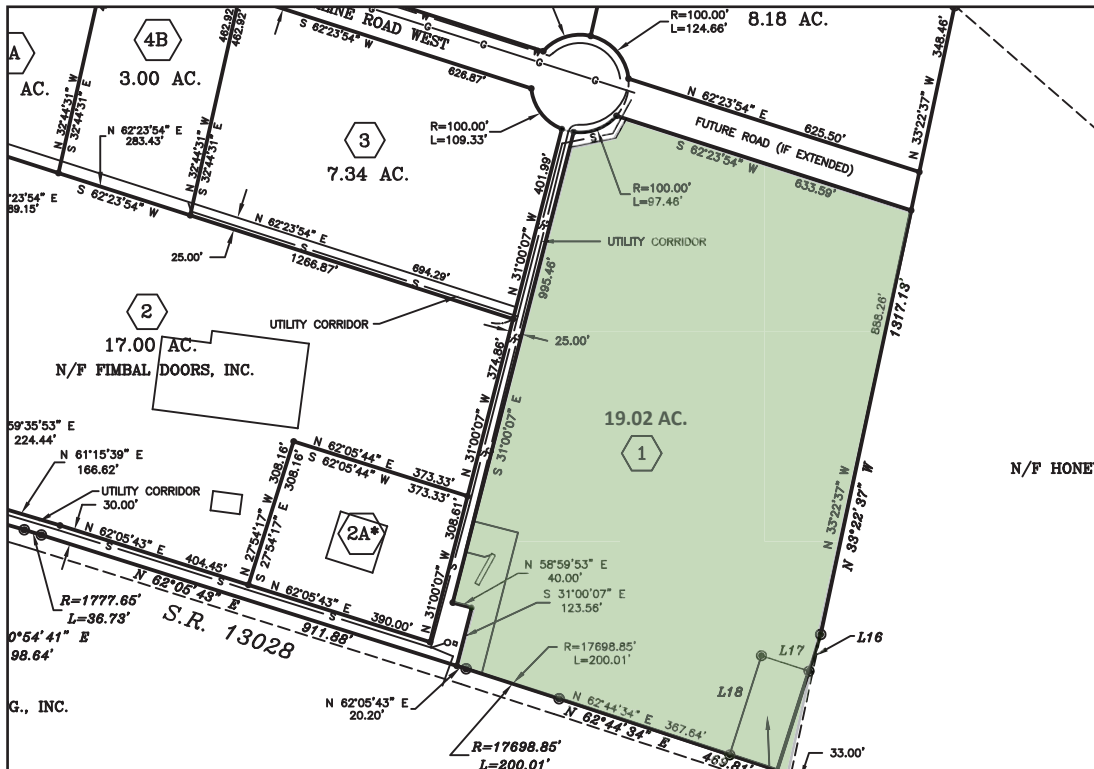


For more information, contact CAN DO
One South Church Street, Suite 200
Hazleton, PA 18201
(570) 455-1508 | (570) 454-7787 fax
www.hazletoncando.com

SITE DETAILS

Current owner:	CAN DO, Inc.	
Previous use of the site:	Undeveloped	
Site acreage:	19.02 acres	
Address:	McAdoo/Tresckow Road (SR 1009) McAdoo, PA 18237	
Property taxes:	Site is designated a Keystone Opportunity Zone (KOZ) with most state and local property taxes abated through December 31, 2017.	
Existing utilities:	All utilities are located at the property boundary Electric: PPL Utilities Propane: UGI Utilities Water: CAN DO, Inc. Sewer: Kline Banks McAdoo Regional Authority Banks Township Municipal Authority	
Current zoning:	Industrial	
Topography:	Site is gentle in topography.	
Neighboring Properties:	Altadis USA, Haulmark Industries, High Mountain Hardware, Fegley Vault	
Proximity to Interstate:	3 miles to Interstate 81, exit 138 through the Borough of McAdoo via State Route 309 10 miles to Interstate 80/81 Interchange	
Proximity to hub airport:	Wilkes-Barre / Scranton International Airport	40 miles
	Lehigh Valley International Airport	47 miles

SITE PLAN



For more information, please contact
CAN DO
 One South Church Street,
 Suite 200,
 Hazleton, PA 18201
 570-455-1508 phone
 570-454-7787 fax
www.hazletoncando.com

