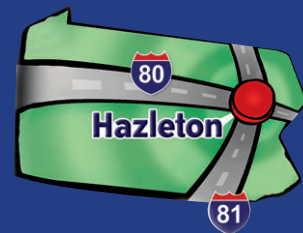


# McAdoo Industrial Park

## Site 1



**For Sale**

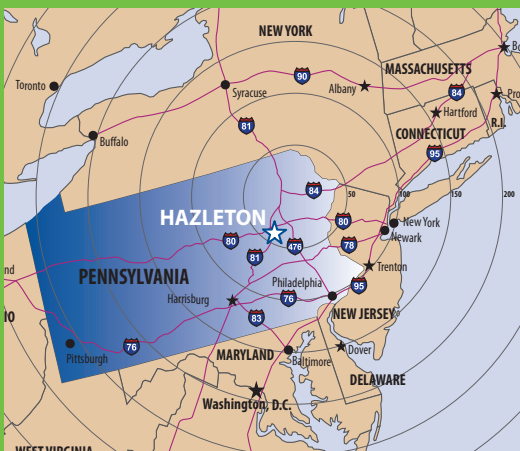
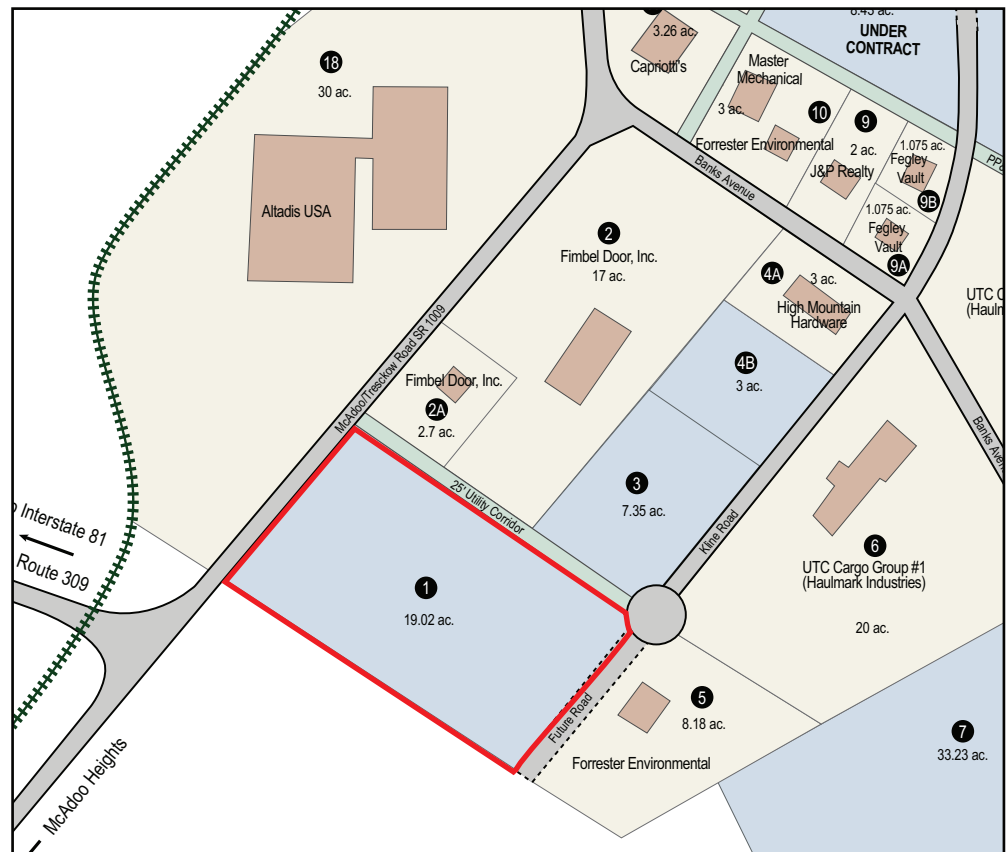
**19.02 acres**

**McAdoo/Tresckow Road  
McAdoo, PA 18237**



*Industrial site suited for  
Manufacturing / Distribution / Warehouse*

### McAdoo Industrial Park



McAdoo Industrial Park is located right outside of Hazleton in Banks Township, Carbon County, just 3 miles from Exit 138 of Interstate 81 via SR 309. The industrial park has fully developed sites available with infrastructure already in place.

McAdoo Industrial Park is home to industries like Altadis USA, PSI Container, and UTC Cargo Group

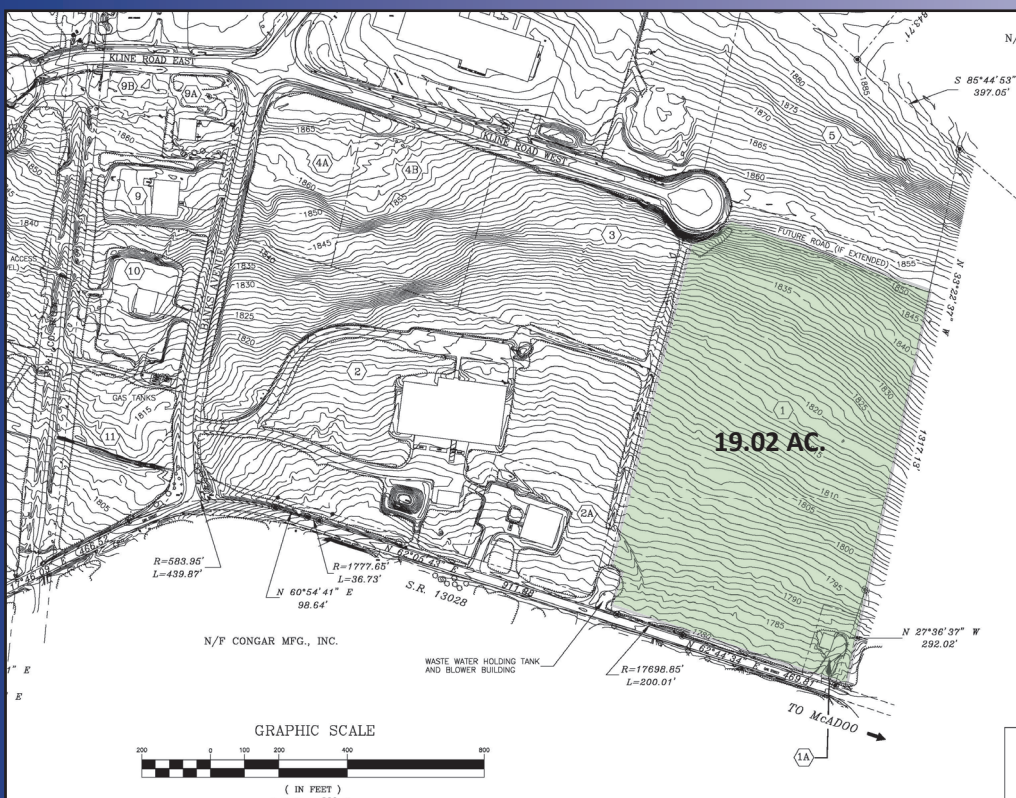


For more information, contact CAN DO  
One South Church Street, Suite 200  
Hazleton, PA 18201  
(570) 455-1508 | (570) 454-7787 fax  
[www.hazletoncando.com](http://www.hazletoncando.com)

# SITE DETAILS

Current owner:	CAN DO, Inc.	
Previous use of the site:	Undeveloped	
Site acreage:	19.02 acres	
Address:	McAdoo/Tresckow Road (SR 1009) McAdoo, PA 18237	
Existing utilities:	All utilities are located at the property boundary	
	Electric:	PPL Utilities
	Gas:	UGI Utilities
	Water:	CAN DO, Inc.
	Sewer:	Kline Banks McAdoo Regional Authority Banks Township Municipal Authority
Current zoning:	Industrial	
Topography:	Site is gentle in topography.	
Neighboring Properties:	Altadis USA, UTC Cargo Group (Haulmark Industries), High Mountain Hardware, Fegley Vault, PSI Container	
Proximity to Interstate:	3 miles to Interstate 81, exit 138 through the Borough of McAdoo via State Route 309 10 miles to Interstate 80/81 Interchange	
Proximity to hub airport:	Wilkes-Barre / Scranton International Airport	40 miles
	Lehigh Valley International Airport	47 miles

## SITE PLAN



For more information, please contact  
**CAN DO**  
One South Church Street, Suite 200,  
Hazleton, PA 18201  
570-455-1508 phone  
570-454-7787 fax  
[www.hazletoncando.com](http://www.hazletoncando.com)  
[cando@hazletoncando.com](mailto:cando@hazletoncando.com)

