

McAdoo Industrial Park

Site 4B



For Sale

3 acres

Kline Road
McAdoo, PA 18237



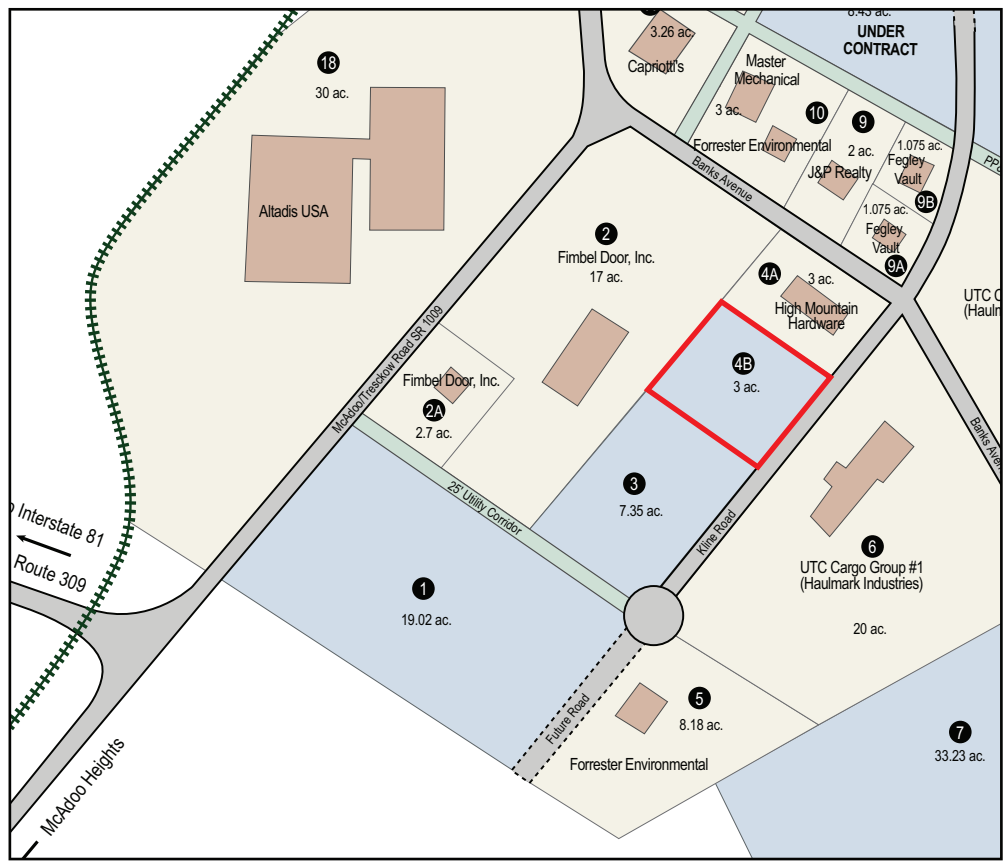
*Industrial site suited for
Manufacturing / Distribution / Warehouse*

McAdoo Industrial Park



McAdoo Industrial Park is located right outside of Hazleton in Banks Township, Carbon County, just 3 miles from Exit 138 of Interstate 81 via SR 309. The industrial park has fully developed sites available with infrastructure already in place.

McAdoo Industrial Park is home to industries like Altadis USA, PSI Container, and UTC Cargo Group



For more information, contact CAN DO
One South Church Street, Suite 200
Hazleton, PA 18201
(570) 455-1508 | (570) 454-7787 fax
www.hazletoncando.com

SITE DETAILS

| | | |
|---------------------------|------------------------------------------------------------------------------------------------------------------------------------------------------------------------------------------------------------------|----------|
| Current owner: | CAN DO, Inc. | |
| Previous use of the site: | Undeveloped | |
| Site acreage: | 3 acres The property can be combined with adjacent Site 3. | |
| Address: | Kline Road McAdoo, PA 18237 | |
| Existing utilities: | All utilities are located at the property boundary Electric: PPL Utilities Gas: UGI Utilities Water: CAN DO, Inc. Sewer: Kline Banks McAdoo Regional Authority Banks Township Municipal Authority | |
| Current zoning: | Industrial | |
| Topography: | Site is gentle in topography. | |
| Neighboring Properties: | UTC Cargo, PSI Container, Altadis USA, High Mountain Hardware | |
| Proximity to Interstate: | 3 miles to Interstate 81, exit 138 through the Borough of McAdoo via State Route 309 10 miles to Interstate 80/81 Interchange | |
| Proximity to hub airport: | Wilkes-Barre / Scranton International Airport | 40 miles |
| | Lehigh Valley International Airport | 47 miles |

SITE PLAN



For more information, please contact
CAN DO
One South Church Street, Suite 200,
Hazleton, PA 18201
570-455-1508 phone
570-454-7787 fax
www.hazletoncando.com
cando@hazletoncando.com

