

# CAN DO Corporate Center

## Site 8: Fox Run Road

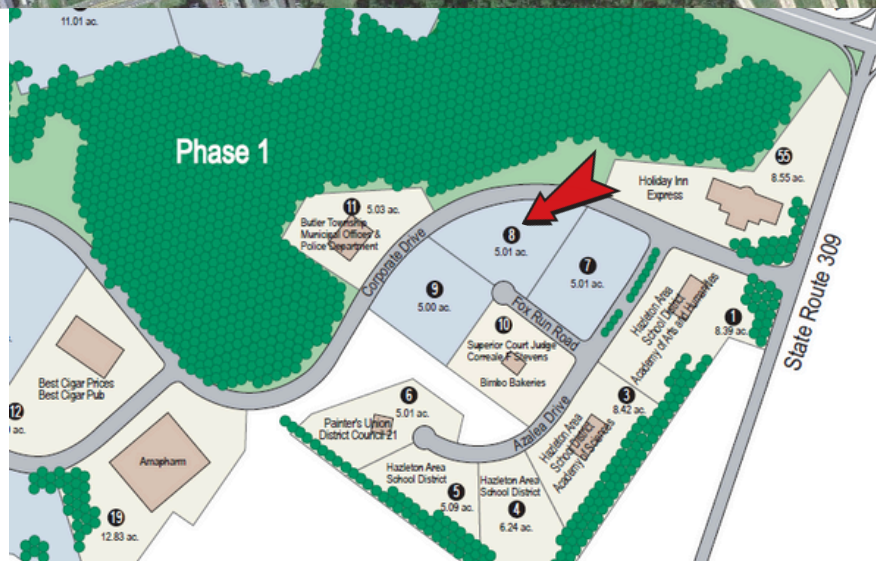
For Sale: 5.01 Acres



## CAN DO Corporate Center

Industrial site suited for:

- Back Office
- Customer Support
- Corporate Headquarters



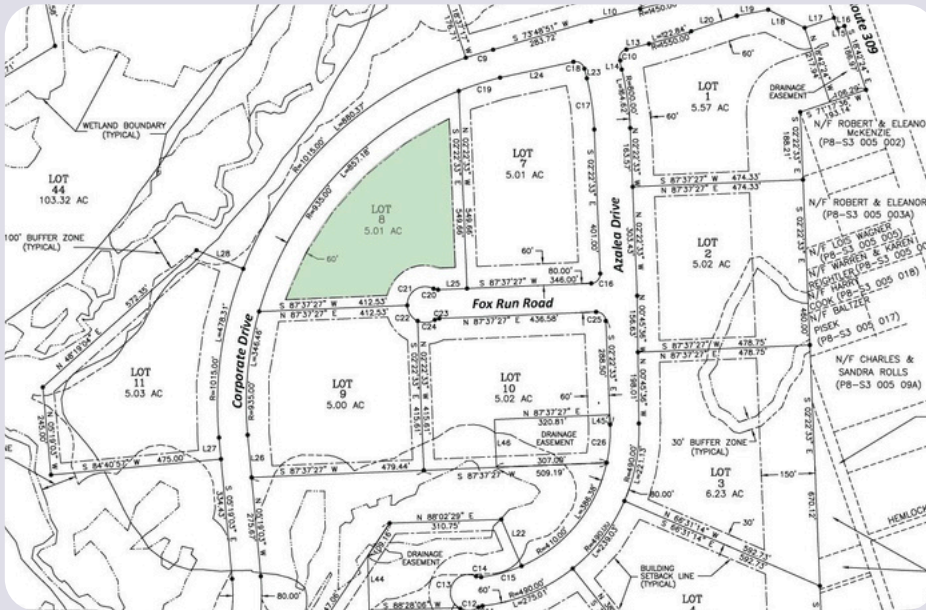
The CAN DO Corporate Center is located in Northeastern Pennsylvania adjacent to Interstate 80 and State Route 309. Just 2 miles to the junction of Interstates 80 & 81 and within a couple hours of New York & Philadelphia.





# Site Details

## Proposed Site Plan



### Existing Utilities:

All utilities are to the property boundary.

**Electric:**

PPL Electric Utilities

**Natural Gas:**

UGI Utilities

**Water & Sewer:**

CAN DO, Inc.

**Telecommunications:**

Frontier Communications

#### • Services Offered:

- All transport services including: Packet VX, Packet Optical, EIA/EVPL, 1B, PBX trunks, ISDN, PRI, Digital Centrex, ATM, Frame Relay, T-1 & T-3

#### • Available Bandwidth:

- T-1, T-3, OC3, OC12, OC48 (per customers request)
- Ethernet up to 1 Gig available early 2018

#### • Type of Service:

- 95% aerial, 2% buried, & 3% conduit
- Fiber and copper facilities serve this site

#### • Closest CO:

- 3000' from digital remote and the distance to the rate center (co) is 9 miles

### Proximity to Interstate:

Adjacent to Interstates 80 and PA State Route 309. Directly off Exit 262, about two miles from the junction of I-80 and I-81, and about 15 miles west of the Northeast Extension of the PA Turnpike

**Current Owner:**

CAN DO, Inc.

**Previous Site Use:**

Undeveloped

**Site Acreage:**

5.01 acres

**Site Description:**

Gentle in topography

**Address:**

Fox Run Road  
Drums, PA 18222

**Zoning:**

Business Park

**Business Park Neighbors:**

Hazleton Area School District (Academy of Sciences & Arts & Humanities Academy), Amapharm, Best Cigar Prices, Best Cigar Pub, JPC Equestrian, Holiday Inn Express

## Contact CAN DO for more information

One South Church Street, Suite 200 Hazleton, PA 18201 | (570) 455-1508 | (570) 454-7787 fax | [hazletoncando.com](http://hazletoncando.com)